

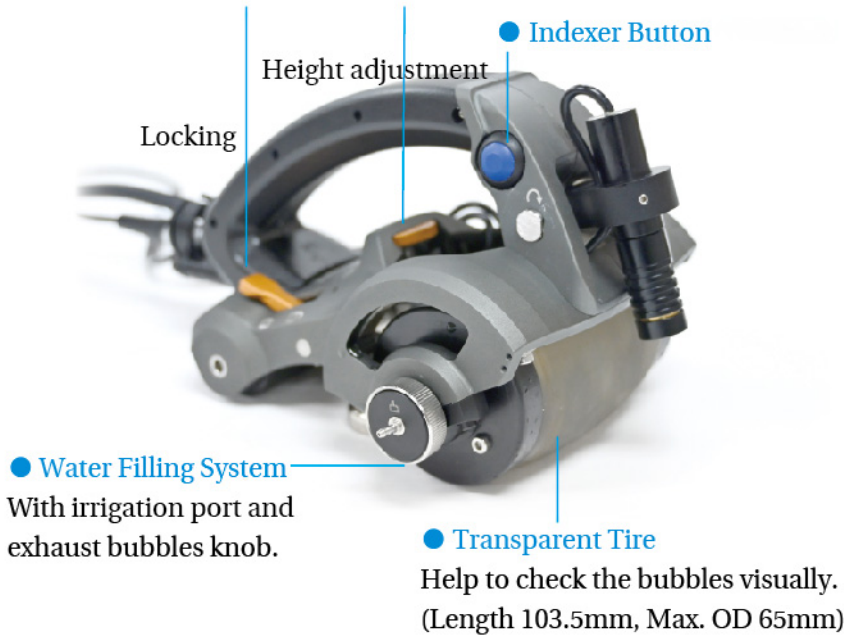
# Crawler with PA Wheel Probe

## WPS-02

Crawler WPS-02 with PA wheel probe is especially good for testing corrosion on composite materials. Suitable for circumferential scanning on pipe OD  $\geq 100\text{mm}$  (3.94 inch), longitudinal scanning on pipe OD  $\geq 50\text{mm}$  (1.97 inch) and plate.

### ● For Adjustable Middle Wheel

For longitudinal inspection and narrow workpiece.



### ● Magnetic Stand (Optional)

Provide magnetic force to ensure stable coupling when inverted scanning.

### ● Encoder

Precision: 18.7step/mm



### ● Start/Stop Button

Start or stop scanning.

### ● Laser with Angle Adjustment

### ● Probe Angle Adjustment


For good coupling on different curvatures.



## Superior Features

- 51.2mm beam coverage.
- Easy operation, C-Scan can be achieved easily with simple coupling.
- With different probes to achieve high resolution and strong penetration.
- Easy quantitative analysis of lamination and porosity for composite plates.
- 25 mm water delay line enables inspection of composites up to 50 mm thick.

## Recommended Accessories

	WPS-02	
PA Wheel Probe	3.5/5Mhz, 64 elements probes	
Magnetic Stand	DXP-05	
Manual Irrigation Device	IH-04 (1.25L)	

## PA Wheel Probes

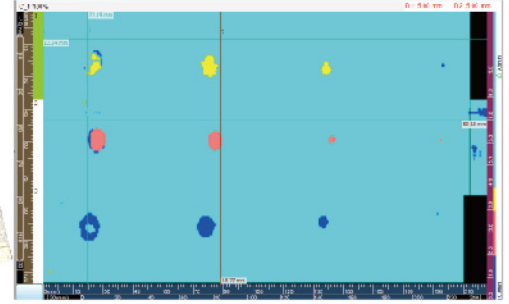
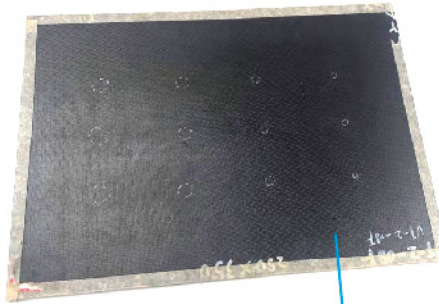
Probe Model	Frequency	Delay Line Height	Elements No.	Pitch	Elevation	Active Aperture mm
	MHz	(mm)		mm	mm	
3.5L64-0.8-6.4-W25	3.5	25	64	0.8	6.4	51.2
5.0L64-0.8-6.4-W25	5	25	64	0.8	6.4	51.2

- WPS-02 is compatible with instruments from Olympus.

# Crawler with PA Wheel Probe

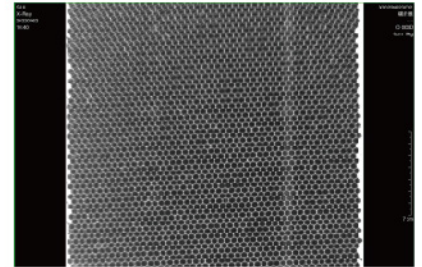
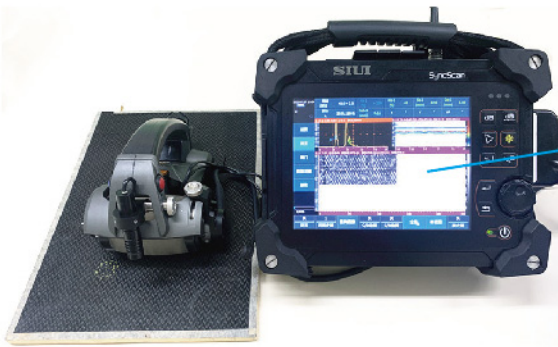
## Testing Results

- CFRP delamination inspection (thickness 5mm)



Delamination with depth 0.3mm-4.7mm

- Honeycomb CFRP inspection (thickness 12mm)



X-ray (no flaws)

## Technical Specification

	WPS-02
IP Code	IP54
Dimension (W×H×L)	160 × 200 × 120 (mm)
Weight	1.3kg(without water); 1.5kg(with water)
Scan Method	Manual, single axis scanning
Encoder Precision	18.7 step/mm
Connecting Cable	SIUI-A14P-D8P-C4P-3M-A
Suitable Tested Workpiece	Circumferential scanning on pipe OD ≥ 100mm (3.94 inch), longitudinal scanning on pipe OD ≥ 50mm (1.97 inch) and plate
Operation Temperature	0°C ~ 40°C
Storage Temperature	-20°C ~ 60°C

# SIUI

Shantou Institute of Ultrasonic Instruments Co., Ltd.

Add: #77, Jinsha Road, Shantou 515041, Guangdong, China

Tel: +86-754-88250150 Fax: +86-754-88251499

E-mail: siui@siui.com Website: <http://www.siui.com>

